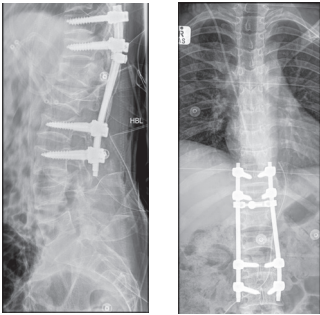




Groundbreaking Spinal Surgery Successfully Performed at Melomed Mitchells Plain



Melomed Mitchells Plain recently successfully carried out a complex spinal procedure - L1 and T12 partial corpectomy via a posterior Vertebral Column Resection approach with instrumentation from T11 to L3, and extradural spinal cancer excision on a 17-year-old patient. **This groundbreaking surgery was led by Orthopaedic and Spine Surgeon, Dr. Hammaad Gamieldien, with expert assistance from Professor Robert Dunn.**

The intricate procedure marked a significant step in correcting severe spinal cord compression and reversing the paralysis in the young patient. It involved the surgical removal of part of the L1 and T12 vertebral body - a technique known as corpectomy - to decompress the spinal cord and nerves. Using the vertebral column resection approach, the tumor was removed circumferentially from around the spinal cord, effectively decompressing the complex spinal tumor. After excising the affected bone, the spine was reconstructed and stabilized using the patient's own bone graft and advanced instrumentation from T11 to L3, ensuring structural support and proper alignment.

The surgery was particularly significant given the age of the patient. At just 17 years old, timely intervention was crucial for preserving neurological function, improving posture, and enhancing long-term quality of life. The patient responded well to the surgery and is now on a carefully monitored path to recovery, supported by a dedicated nursing team.

Dr. Hammad Gamieldien brought his extensive experience to this complex case. His collaboration with Prof Robert Dunn, a pioneer in the field of orthopaedics and spinal surgery in South Africa, proved to be a powerful combination of skill, precision, and innovation.

Melomed Mitchells Plain continues to stand at the forefront of advanced surgical care, proudly offering state-of-the-art procedures to patients in need. This successful surgery reflects the hospital's ongoing commitment to delivering world-class healthcare and transforming lives—one patient at a time.

We wish the young patient continued strength and healing, and we applaud the surgical team for their dedication to excellence in spinal care.

For more information contact Melomed Mitchells Plain on 021 392 3126.